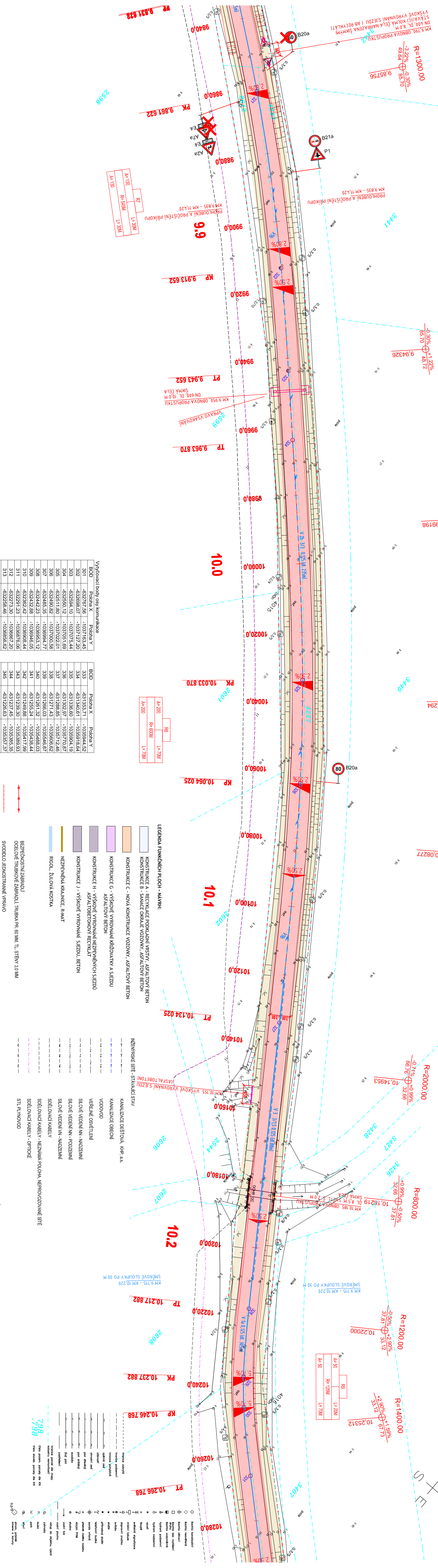


SITUACE STAVBY (KOORDINAČNÍ)
ČERNILOV - LIBŘICE
1:500



BOU	POUHA X	POUHA Y
301	-632767.56	-1037163.46
302	-632698.07	-1037177.20
303	-632594.10	-1037075.44
304	-632452.52	-1037025.69
305	-632282.12	-1036975.93
306	-632082.52	-1036925.69
307	-631842.52	-1036875.93
308	-631562.52	-1036825.69
309	-631242.52	-1036775.93
310	-630882.52	-1036725.69
311	-630482.52	-1036675.93
312	-630042.52	-1036625.69
313	-629562.52	-1036575.93
314	-629042.52	-1036525.69
315	-628482.52	-1036475.93
316	-627882.52	-1036425.69
317	-627242.52	-1036375.93
318	-626562.52	-1036325.69
319	-625842.52	-1036275.93
320	-625082.52	-1036225.69
321	-624282.52	-1036175.93
322	-623442.52	-1036125.69
323	-622562.52	-1036075.93
324	-621642.52	-1036025.69
325	-620682.52	-1035975.93
326	-619682.52	-1035925.69
327	-618642.52	-1035875.93
328	-617562.52	-1035825.69
329	-616442.52	-1035775.93
330	-615282.52	-1035725.69
331	-614082.52	-1035675.93
332	-612842.52	-1035625.69

BOU	POUHA X	POUHA Y
333	-631353.71	-1035844.52
334	-631340.61	-1035839.64
335	-631336.60	-1035834.19
336	-631332.57	-1035828.62
337	-631328.52	-1035822.69
338	-631324.43	-1035816.67
339	-631320.33	-1035810.63
340	-631316.24	-1035804.60
341	-631312.12	-1035798.56
342	-631308.02	-1035792.53
343	-631303.93	-1035786.50
344	-631299.83	-1035780.46
345	-631295.73	-1035774.43
346	-631291.62	-1035768.40
347	-631287.52	-1035762.36
348	-631283.43	-1035756.33
349	-631279.33	-1035750.29
350	-631275.23	-1035744.26
351	-631271.13	-1035738.23
352	-631267.03	-1035732.19
353	-631262.93	-1035726.16
354	-631258.83	-1035720.12
355	-631254.73	-1035714.09
356	-631250.63	-1035708.05
357	-631246.53	-1035702.02
358	-631242.43	-1035695.98
359	-631238.33	-1035689.95
360	-631234.23	-1035683.91
361	-631230.13	-1035677.88
362	-631226.03	-1035671.84
363	-631221.93	-1035665.81
364	-631217.83	-1035659.77

BOU	POUHA X	POUHA Y
365	-631213.73	-1035653.74
366	-631209.63	-1035647.70
367	-631205.53	-1035641.67
368	-631201.43	-1035635.63
369	-631197.33	-1035629.60
370	-631193.23	-1035623.56
371	-631189.13	-1035617.53
372	-631185.03	-1035611.49
373	-631180.93	-1035605.46
374	-631176.83	-1035599.42
375	-631172.73	-1035593.39
376	-631168.63	-1035587.35
377	-631164.53	-1035581.32
378	-631160.43	-1035575.28
379	-631156.33	-1035569.25
380	-631152.23	-1035563.21
381	-631148.13	-1035557.18
382	-631144.03	-1035551.14
383	-631139.93	-1035545.11
384	-631135.83	-1035539.07

BOU	POUHA X	POUHA Y
385	-631131.73	-1035533.04
386	-631127.63	-1035527.00
387	-631123.53	-1035520.97
388	-631119.43	-1035514.93
389	-631115.33	-1035508.90
390	-631111.23	-1035502.86
391	-631107.13	-1035496.83
392	-631103.03	-1035490.79
393	-631098.93	-1035484.76
394	-631094.83	-1035478.72
395	-631090.73	-1035472.69
396	-631086.63	-1035466.65
397	-631082.53	-1035460.62
398	-631078.43	-1035454.58
399	-631074.33	-1035448.55
400	-631070.23	-1035442.51
401	-631066.13	-1035436.48
402	-631062.03	-1035430.44
403	-631057.93	-1035424.41
404	-631053.83	-1035418.37
405	-631049.73	-1035412.34
406	-631045.63	-1035406.30
407	-631041.53	-1035400.27
408	-631037.43	-1035394.23
409	-631033.33	-1035388.20
410	-631029.23	-1035382.16
411	-631025.13	-1035376.13
412	-631021.03	-1035370.09
413	-631016.93	-1035364.06
414	-631012.83	-1035358.02
415	-631008.73	-1035351.99
416	-631004.63	-1035345.95
417	-631000.53	-1035339.92
418	-630996.43	-1035333.88
419	-630992.33	-1035327.85
420	-630988.23	-1035321.81
421	-630984.13	-1035315.78
422	-630980.03	-1035309.74
423	-630975.93	-1035303.71
424	-630971.83	-1035297.67
425	-630967.73	-1035291.64
426	-630963.63	-1035285.60
427	-630959.53	-1035279.57
428	-630955.43	-1035273.53
429	-630951.33	-1035267.50
430	-630947.23	-1035261.46
431	-630943.13	-1035255.43
432	-630939.03	-1035249.39
433	-630934.93	-1035243.36
434	-630930.83	-1035237.32
435	-630926.73	-1035231.29
436	-630922.63	-1035225.25
437	-630918.53	-1035219.22
438	-630914.43	-1035213.18
439	-630910.33	-1035207.15
440	-630906.23	-1035201.11
441	-630902.13	-1035195.08
442	-630898.03	-1035189.04
443	-630893.93	-1035183.01
444	-630889.83	-1035176.97
445	-630885.73	-1035170.94
446	-630881.63	-1035164.90
447	-630877.53	-1035158.87
448	-630873.43	-1035152.83
449	-630869.33	-1035146.80
450	-630865.23	-1035140.76
451	-630861.13	-1035134.73
452	-630857.03	-1035128.69
453	-630852.93	-1035122.66
454	-630848.83	-1035116.62
455	-630844.73	-1035110.59
456	-630840.63	-1035104.55
457	-630836.53	-1035098.52
458	-630832.43	-1035092.48
459	-630828.33	-1035086.45
460	-630824.23	-1035080.41
461	-630820.13	-1035074.38
462	-630816.03	-1035068.34
463	-630811.93	-1035062.31
464	-630807.83	-1035056.27
465	-630803.73	-1035050.24
466	-630799.63	-1035044.20
467	-630795.53	-1035038.17
468	-630791.43	-1035032.13
469	-630787.33	-1035026.10
470	-630783.23	-1035020.06
471	-630779.13	-1035014.03
472	-630775.03	-1035007.99
473	-630770.93	-1035001.96
474	-630766.83	-1034995.92
475	-630762.73	-1034989.89
476	-630758.63	-1034983.85
477	-630754.53	-1034977.82
478	-630750.43	-1034971.78
479	-630746.33	-1034965.75
480	-630742.23	-1034959.71
481	-630738.13	-1034953.68
482	-630734.03	-1034947.64
483	-630729.93	-1034941.61
484	-630725.83	-1034935.57
485	-630721.73	-1034929.54
486	-630717.63	-1034923.50
487	-630713.53	-1034917.47
488	-630709.43	-1034911.43
489	-630705.33	-1034905.40
490	-630701.23	-1034899.36
491	-630697.13	-1034893.33
492	-630693.03	-1034887.29
493	-630688.93	-1034881.26
494	-630684.83	-1034875.22
495	-630680.73	-1034869.19
496	-630676.63	-1034863.15
497	-630672.53	-1034857.12
498	-630668.43	-1034851.08
499	-630664.33	-1034845.05
500	-630660.23	-1034839.01